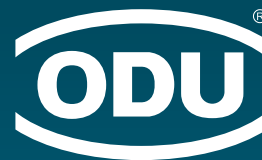


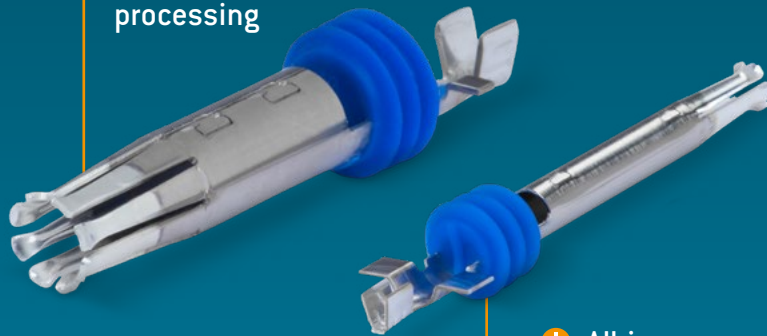
ODU AUTOMOTIVE CONTACTS FOR EV-CHARGING



ODU STAMPTAC®

- Stamping technology for customer-specific high volume solutions
- High cost efficiency
- Available for IEC type 2
- > 10,000 mating cycles
- RoHS conform and lead-free

+ For automated processing



+ All-in-one IPX7 solution

+ Rugged and universal contact system



+ Available for all charging standards

+ Flexible contact design

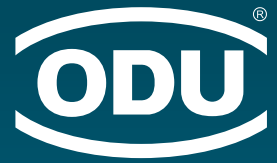
ODU TURNTAC®

- Turned, slotted contacts
- > 10,000 mating cycles
- Low and stable mating and demating forces
- Various cable assembly and termination solutions



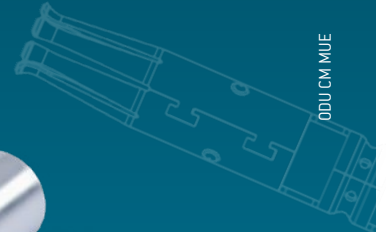
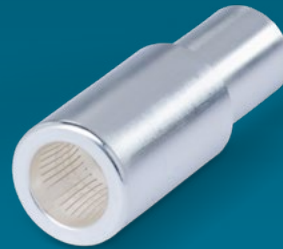
ODU AUTOMOTIVE

CONTACT TECHNOLOGY FOR THE FUTURE OF MOBILITY

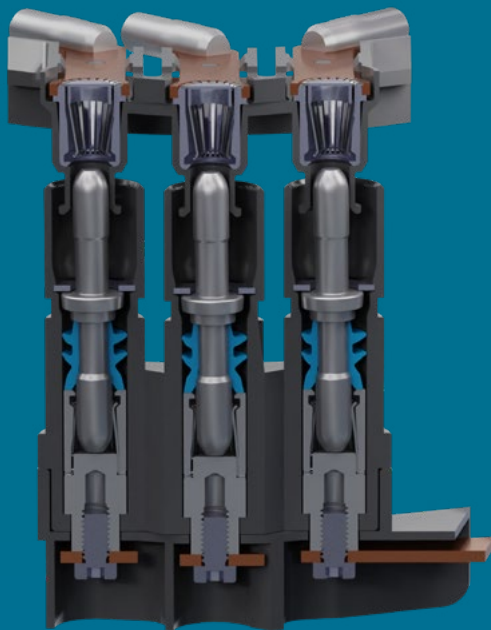


ODU LAMTAC®

- Proven for high-current connections
- Vibration and shock resistant
- High contact security
- > 10,000 mating cycles
- Temperature resistance up to 180 °C
- Maximum number of contact points
- Low and stable contact resistance
- Various cable assembly and termination solutions



ODU CM MUE



ODU DOCKING MATE®

- Compensation ± 1 mm
- With ODU LAMTAC® Flex technology
- Modular design – many variations
- Even with sturdy busbar design
- Customized housings to fit your needs perfectly
- Small numbers of components
- Easily adaptable – even to tight spaces
- High process capability
- Enables automated assemblies
- Direct connection



ODU Automotive GmbH

Pregelstraße 11 · 84453 Mühldorf a. Inn · Germany

Tel.: +49 8631 6156-0 · Fax.: +49 8631 6156-49

E-Mail: sales@odu-automotive.com

www.odu-automotive.com



Website
ODU
Automotive



Videos
ODU
Automotive

All dimensions are in mm. Some figures are for illustrative purposes only. Subject to change without notice. Errors and omissions excepted. We reserve the right to change our products and their technical specifications at any time in the interest of technical improvement. This publication supersedes all prior publications. This publication is also available as a PDF file that can be downloaded from www.odu-automotive.com

Printed on certified recycled paper.



ODU AUTOMOTIVE / 0V / 0922 / EN